

Our Fleet

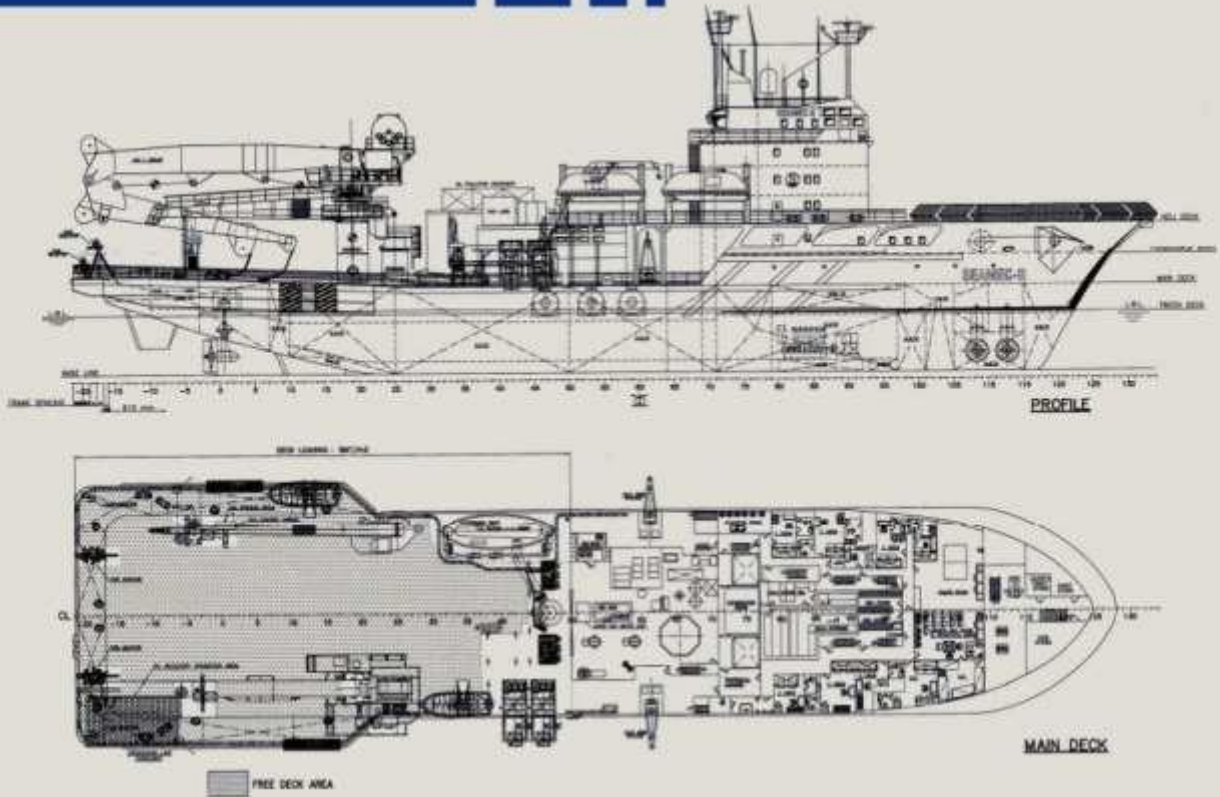
# SEAMEC II

[ A Multifunctional diving support vessel



SEAMEC LIMITED

**MMG**  
MM AGRAWAL GROUP



The Seamec II is a multi-functional diving support vessel, capable of working throughout the year in severe sea and weather conditions.

## Capabilities

Built in 1982, the vessel is designed, constructed and certified for worldwide operations. The Seamec II provides services, which include S.B.M maintenance removal and installations, Platform, Riser and Pipeline repairs, Subsea constructions and Maintenance operations & deployment of ROV

## Diving System

Rated to 300 M. Three men bell with heave compensated handling system. 'Gas Mizer' reclaim for divers. Two six men and One four man D.D.C.'s. Divers under pressure can be evacuated by means of the hyperbaric lifeboat positioned on the port side. The system includes complete Life Support Machinery with Life Support controls and Dive operation control, alongwith Dive Control Room consists of Diver Gas reclaim System and under deck Gas storage of 14,000 m<sup>3</sup> approx and Gas transfer Compressor. The surface air diving station is located on the starboard side. Also equipped with Diving LARS and Air Diving Chamber.

## Communication

GMDSS Compliant equipments available onboard.

## Dynamic Positioning System

The vessel is fitted with a fully redundant Kongsberg SDP 521 Dynamic Positioning system. There are two (HiPAP 350 & 410) hydroacoustic transducers, two satellite positioning systems (DGPS), and two vertical taut wire reference systems.

## Accommodation

Modern accommodation is provided for a total complement of 90 persons, comprising:

- 12 x Single berth cabins
- 32 x Double berth cabins
- 02 x Four bed cabins
- 01 x Six bed cabins
- Additional 02 bed Hospital.

## Cranage

The vessel is fitted with 100 ton Knuckle boom crane on the starboard side of the work deck, 20 ton crane on the port side Main deck and 5 ton telescopic cargo handling crane on the port side boat deck.

## Water Maker

- 1 x Reverse Osmosis, Sea Recovery
- Portable water production 15 m<sup>3</sup>/day.
- 1 x RO plant, Make:SLCE, capacity—27 m<sup>3</sup>/day

# Specifications

## Principle dimensions

Length overall.....	95.56 m
Length Between pp.....	76.20 m
Breadth Moulded.....	18.00 m
Breadth Extreme.....	23.20 m

## Operating draft

Summer draft.....	5.20 m
Dead weight.....	1744 tonnes

## Tonnage

Gross Tonnage.....	4503 tonnes
Net Tonnage.....	1351 tonnes

## DP system

Kongsberg SDP 521

## Reference Systems

- 1 x Hi PAP 410
- 1 x Hi PAP 351
- 2 x DGPS ( BPS-116, GW 9205)
- 2 x Taut wires (MK III & MK15B)

## Environmental Regulatory

Number 99/99/94  
Power Plant

- 4 x Man/Brons 25/30 9 cylinder diesel each driving a NEBB Alternator producing 1700 Kw at 6000 volts 60 Hz

**Total generated power 6800 kW**

## Propulsion

### Bow

- 2 x Rolls Royce 250 TV, S. No. 279079-80, 790 Kw each at 312 RPM Thrust Power 12T (each)

### Stern

- 2 x LIAAEN compass thrusters Type TCN 105/75-250 1880 Kw each at 225 RPM Thrust Power 32T (each)

## Endurance

### Fuel consumption (typical)

- |             |                    |
|-------------|--------------------|
| ▪ In port   | 3.5 m <sup>3</sup> |
| ▪ Transit   | 18 m <sup>3</sup>  |
| ▪ DP approx | 12 m <sup>3</sup>  |

### Maximum speed

- Economic Transit Speed

## Vessel speed

- |                          |          |
|--------------------------|----------|
| ▪ Maximum speed          | 10 knots |
| ▪ Economic Transit Speed | 9 knots  |

## Fire Fighting Fi-

### Fi Monitors

- 04 Nos. 1800 m<sup>3</sup>/hr each. Thune Eureka.

## Helideck

Bell 212 or similar

## Diving system

- Depth rating 200 MSW
- No in sat 2x 6 man and 1 x 4 man D.D.C.
- No of bells 1 x 3 man
- Bell volume 4.5 m<sup>3</sup>
- System volume 100.33 m<sup>3</sup>
- Gas storage 14,000 m<sup>3</sup>
- Reclaim system is connected to Diving Bell.

Moonpool 3.5 m x 3.5 m

## Flag

Indian

## IMO No.

8109292

## Call sign

VTPN

## Classification

LRS - + 100A1 Diving Support Ship / Fire Fighting Ship 2 (7200 m<sup>3</sup>/hr) with water spray; Helicopter Deck; Ice Class 3, + LMC; DP(AA); UMS IRS - SUL, Supply Vessel, 'Ha', AGNI 2(7200 m<sup>3</sup>/hr), JUS, GS(SS),IY

## Year built / Builder

1982 at De Hoop, Lobith, Holland.

## Cranage

### Main lifting facilities

- 1 x 100 ton 360° Electro/Hyd. Crane, Tri yards.

### Additional lifting facilities

- 1 x 20 ton Electro/Hyd. Crane, Hydralift.
- 1 x 5 ton stores crane on boat deck, Grey Mckenzie.

## Deck space

600 sq.m

## Deck load

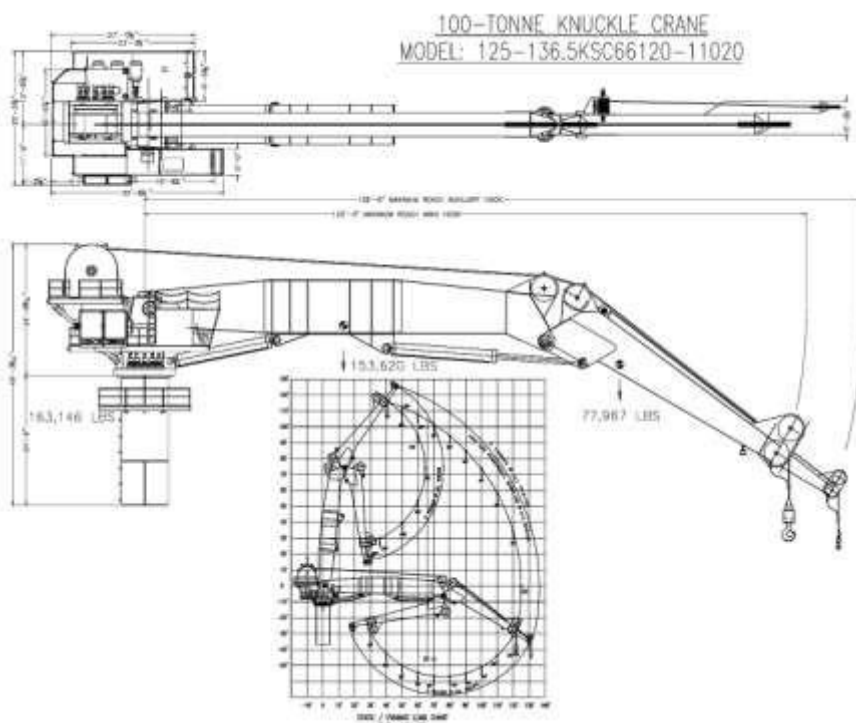
5 tons/sq.m

## Max overall

700 T

## Capacities

- |                     |                     |
|---------------------|---------------------|
| ▪ Marine diesel oil | 1050 m <sup>3</sup> |
| ▪ Fresh water       | 335 m <sup>3</sup>  |
| ▪ Ballast water     | 1165 m <sup>3</sup> |



CONTACTS

**Seamec Limited**

A-901-905, 9<sup>th</sup> Floor, 215 Atrium,  
Andheri-Kurla Road, Andheri East,  
Mumbai – 400 093.

India

Phone: + 91 22 66941800

Fax: + 91 22 66941818

Email: [contact@seamec.in](mailto:contact@seamec.in)

[www.seamec.in](http://www.seamec.in)



This document is the property of Seamec and is not intended to be a binding contractual document. Any information contained herein shall not result in any binding obligation on the part of Seamec, Or any of its affiliates, and is provided for information purposes only.

